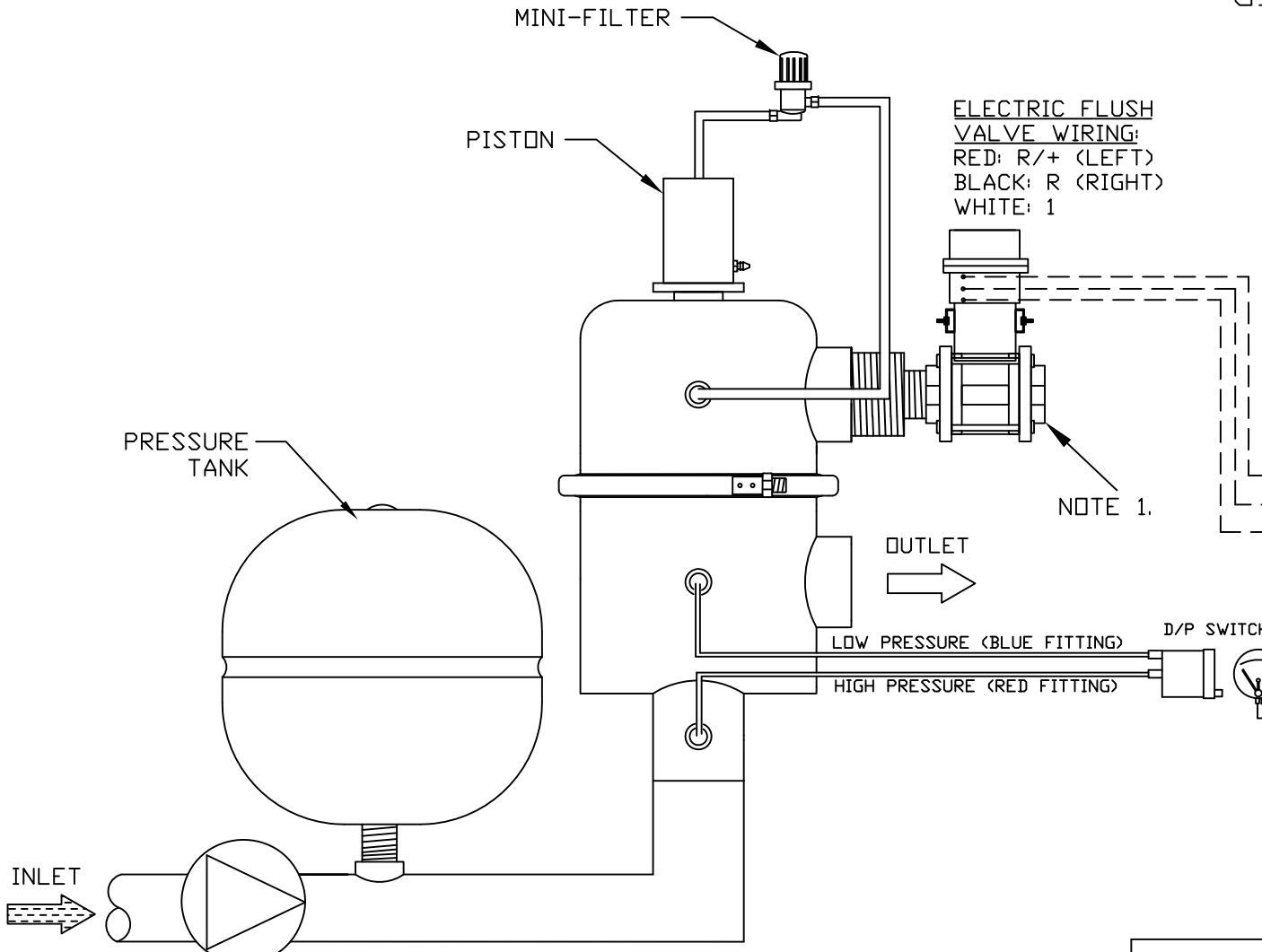
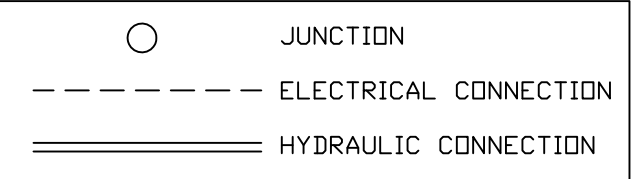
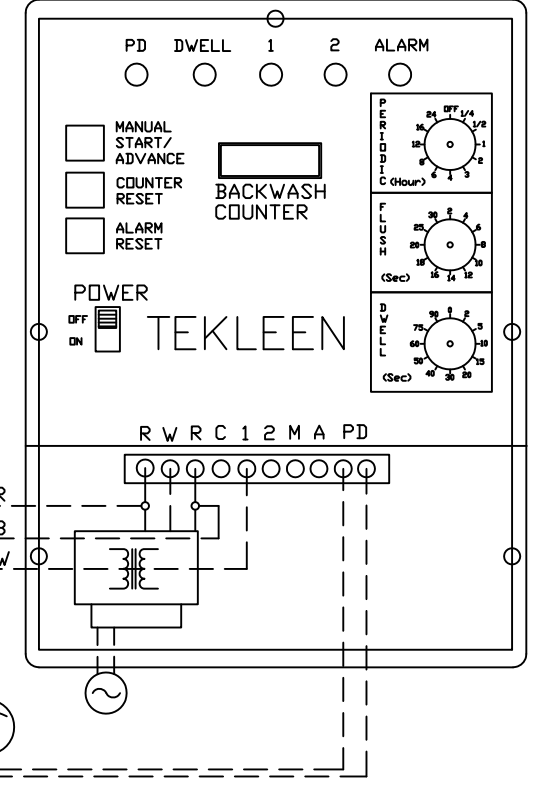


REVISIONS				
REV	ZONE	DESCRIPTION	DATE	APPROVED
1	3A	ADDED NOTE 1 REGARDING UNION.	09/24/13	S.P.

# GB6 ELECTRIC CONTROLLER



**ELECTRIC FLUSH VALVE WIRING:**  
 RED: R/+ (LEFT)  
 BLACK: R (RIGHT)  
 WHITE: 1



**NOTES:**  
 1. IT IS RECOMMENDED THAT A UNION BE INSTALLED BETWEEN THE FLUSH VALVE AND FLUSH LINE FOR EASE OF MAINTENANCE.

UNLESS OTHERWISE SPECIFIED DIMENSIONS ARE IN INCHES TOLERANCES		AUTOMATIC FILTERS, INC. 2672 S. LA CIENEGA BLVD. LOS ANGELES, CA 90034 (310) 839-2828 FAX (310) 839-6878	
DECIMALS .XX ± .05 .XXX ± .01	ANGULAR ± 0.5 DEG.	TITLE WIRING LAYOUT FOR MTF FILTER WITH GB6 CONTROLLER, ELECTRIC BALL VALVE, AND PRESSURE TANK	
DRAWN S. PERKINSON	DATE 08/12/11	SIZE A	DWG NO. WIRE-MTFGB6-EFV-LAY-02
CHECKED		DESIGN FOR:	REV 1
		NOT TO SCALE	SHEET 1 OF 1